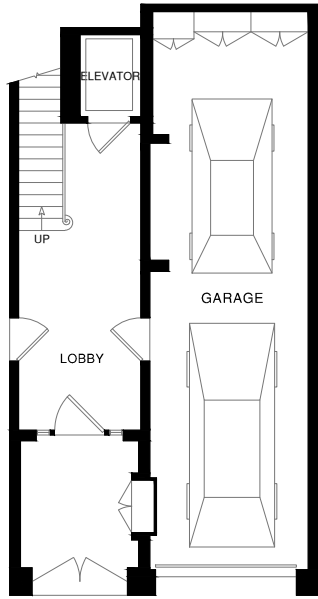


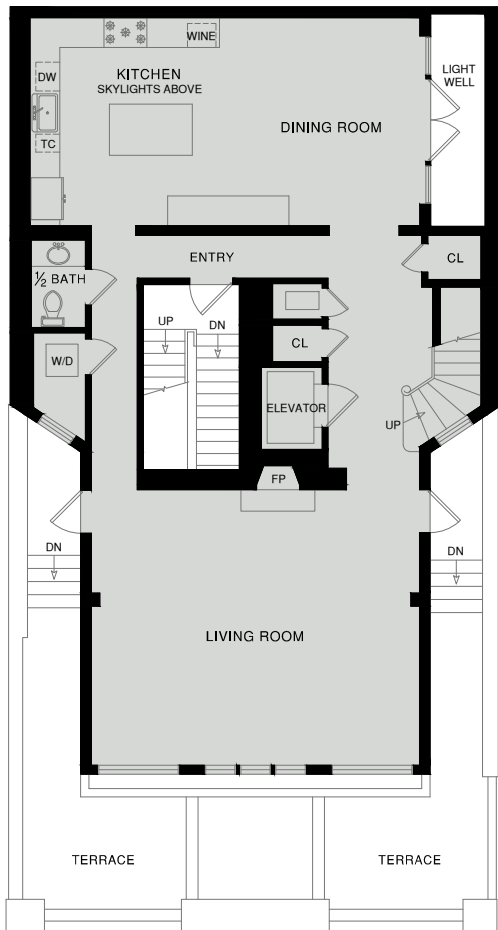
2115 BROADWAY STREET

SAN FRANCISCO, CA

3,310 TOTAL
LIVABLE SQ FT

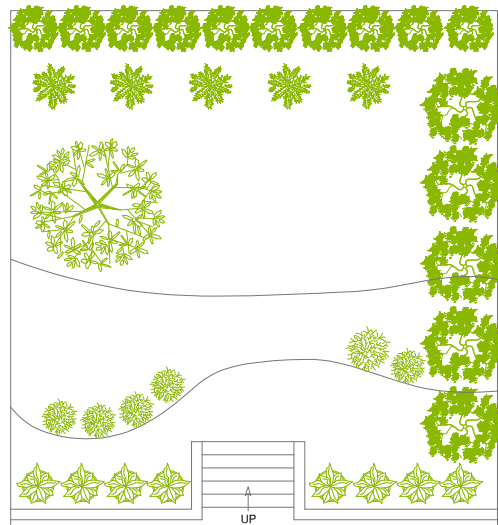


LOWER LEVEL

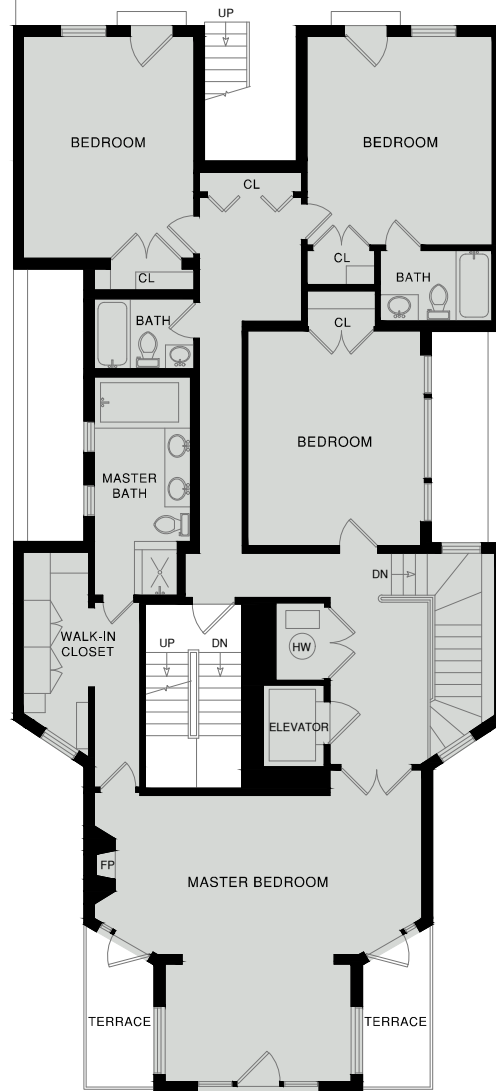


MAIN LEVEL

1,415 SQ FT



PATIO



UPPER LEVEL

1,895 SQ FT

NOTE: SQ FT DATA HAS BEEN DERIVED PER THE EXTERIOR FACE OF ALL BOUNDARY WALLS.

NOTE: SQ FT FIGURES ARE ESTIMATES ONLY AND HAVE BEEN DERIVED SIMPLY FOR THE MARKETING-STYLE FLOOR PLANS DEVELOPED BY OPEN HOUSE DRAFTING.